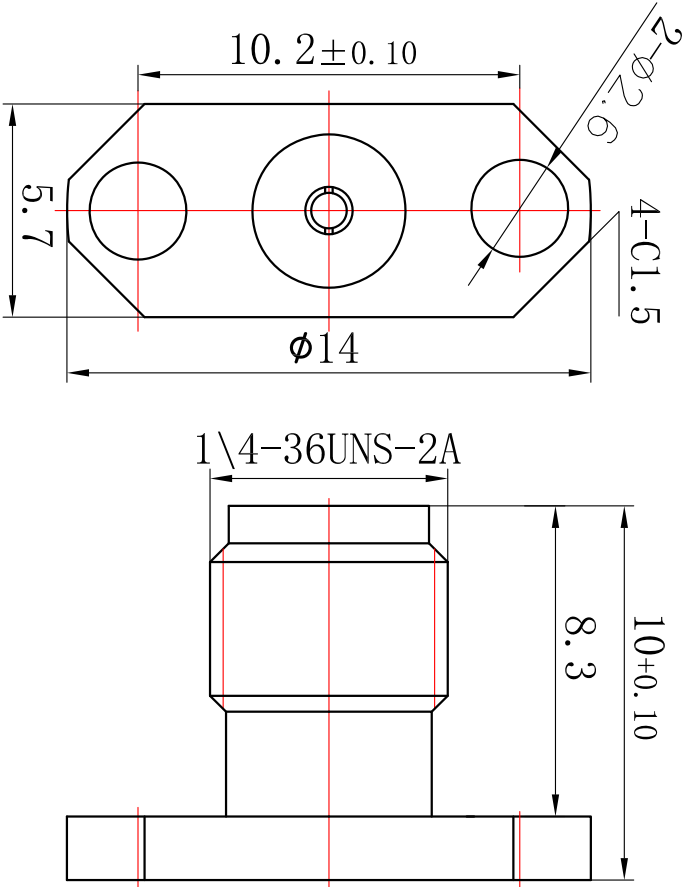


Reversion	Engineering Change Description	Date	Owner
A/0	NEW	2010.06.05	ZXM

Electrical performance		
Characteristic impedance	50 Ω	
Frequency range	DC to 8 GHz	
Standing wave ratio(VSWR)	≤1.15 (DC~8GHz)	
withstand voltage	≤0.1 x √f (GHz) dB	
working voltage	335 V rms	
Test voltage	1000 V rms	
Insulation resistance	≥5000M Ω	
Center pin contact resistance	≤3m Ω	
Conductor contact resistance	≤2.5m Ω	
Center conductor retention force	≥0.28N	
Intermodulation 3rd order	N/A	
Mechanical and environment		
Tempreture range	-40~+155℃	
Salt spray test time	48H	
Airtight	N/A	
durability	≥500 cycles	
Materials		
Connector parts	Material	Plating
Center contact	QBe	Au
Outer contact	brass	Au
Dielectric	PTFE	



STANDARD TOLERANCES (Unless stated otherwise)		Product design		TITLE:	
---	--	----------------	--	--------	--

CAD GENERATED DRAWING, DO NOT MANUALLY UPDATE		Geometric tolerances		Design		Dashing Com-Tek Co., Ltd	
Any statements in this article shall not be interpreted as suggesting infringement of existing patents. Individual values may vary depending on factors including but not limited to application, design, cable type, assembly, and others workmanship		Positional tolerance	X	.X	Drawn	戴盛通信 Dashing Com-Tek Co., Ltd	TITLE: SMA-50KFDa-2
			0-6	±0.1	±0.05		
			6-10	±0.1	±0.05		
			10-30	±0.15	±0.10		
		ANGLE ±1°	>30	±0.15	±0.10	Checked	
		Scale:	As mension		Approvals		Drawing No. : DS3. 650. 305